

Rear Door Stay Conversion Kit

BRITPART

The quality parts for Land Rovers

FITTING INSTRUCTIONS

Part Number - DA1203 & DA1204

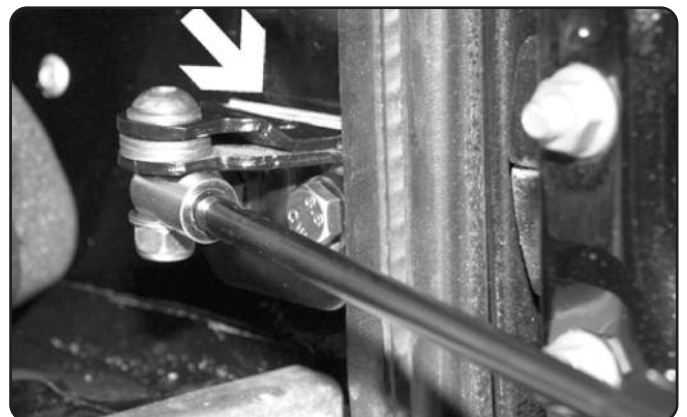
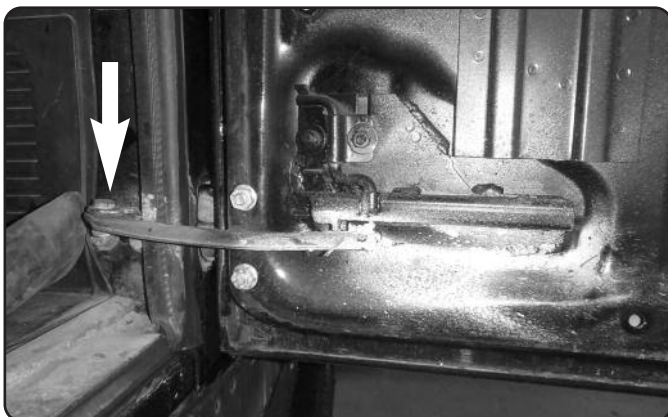


Defender - up to 2002

Undo the door stay pivot bolt. Remove the door handle, wiper motor cover and cable cover off the door then unscrew and remove the door card.

Defender - 2002 onwards

First remove the inner door handle. On post 2002 vehicles remove the plastic trim from behind the door lock then pop off the panel starting in one corner and working your way around.



Undo pivot bolt and remove the door stay. Slacken the pivot bracket bolts on the inner wheel arch and insert the shims provided. On pre-2002 doors (welded frame) it will be necessary to undo and turn the pivot bracket and turn it around as the gas strut mounts lower on the door frame.

Disclaimer

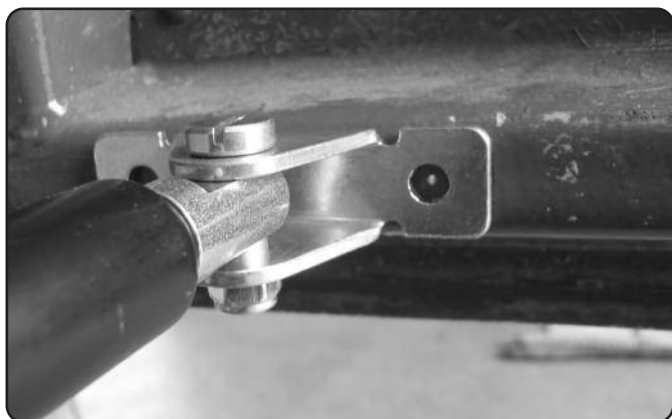
These fitting instructions are intended for general guidance only. No responsibility will be accepted for damage to persons, property, equipment or vehicles caused during or arising from the fitment or using of this product. Fitting this item to your vehicle may constitute a vehicle modification and therefore we strongly recommend that you check the product complies with local laws and legislation and always inform the vehicle's insurance company accordingly.



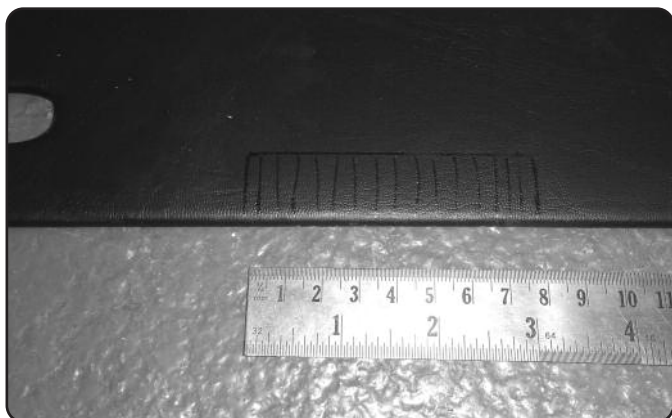
FITTING INSTRUCTIONS - continued



Fit strut loosely to the pivot bracket using the new bolt provided. Position the strut against the door and open or close the door until you get a clearance at this point allowing for clearance of the door card to fit on pre-2002 vehicles and so that the strut does not get damaged during operation on all ages of vehicles.



Mark the holes on the new mounting plate on the door. Measure the size of the pop rivets provided and select a suitable drill bit. Drill one hole at a time and rivet each one in turn as to ensure the bracket does not move.



On post 2002 vehicles refit the door card and handle. On pre-2002 vehicles you will have to trim the door card before refitting it. On pre-2002 vehicles reposition the door card into place and mark out and trim the area where the new bracket is fitted and cut out using a suitable tool. Position and refix the door card into place then the wiper motor cover and other covers and the door handle.

IMPORTANT

Always hold onto the door whilst opening or closing.